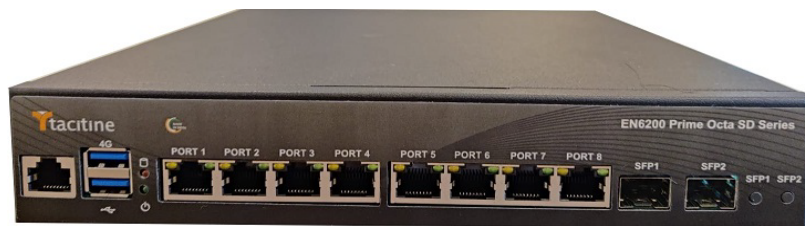


## Next Generation Firewall



Extended  
Ports  
With  
Vigorous  
Security  
And  
Ascendable  
Users

EN6200-Prime is designed keeping in mind the requirement of pay as you grow model which is most required for the current market conditions.

Compared to the other product's Tacitine moved one step ahead of providing a comprehensive solutions to meet customer IT needs on seamless failover between the private cloud and alternate Internet connection, secure branch connectivity with 100% uptime and remote manageability coupled with 2x scalability.

EN6200 Prime's scalability feature ensures 60% saving on capex cost on new UTM purchase when the organization grows 2x on their user numbers.

Tacitine UTM's inbuilt logs and elaborated reports on every configured features make EN6200 Prime not just a UTM box, instead it is informative, proactive on security breaches, easy to use and provides complete control of the network.

In addition to UTM features, Prime Series are equipped with AAA Hotspot features for individual user control on both wired and wireless network.

Prime Series supports 3G/4G dongles and hotspot along with multiple wired internet connections for auto failover and load balancing.

EN6200 Prime Series are versatile, scalable, robust and rack mountable.

## Specifications

Performance Parameters	EN6200 PRIME OCTA 75-SD-SH
Concurrent Sessions	8M
New Sessions/sec	300K
Firewall Throughput - Test Condition (Mbps)	7500
Firewall Throughput - Real World (Mbps)	6000
Type of Interface (GE + SFP)	8x1GE & 2x1G SFP
No. of WAN Ports	8
IPSec (Site-Site) & IPSec VPN Peers	5000 & 5000
Site to Site / Client to SSL VPN	5000
NGIPS Signature supported	35000
Support for BGP Routing	Yes
IPv6 Ready	Yes
Firewall Policies - License	Yes
IP-MAC binding support	Yes
Geo-fencing support	Yes
Rate limits(to handle DoS attacks)	Yes
LDAP Integration	Yes
High Availability License	Yes
Load Balancing among minimum 5 ISP links	Yes
Hardware Specification	
Gigabit Ethernet Ports	1xLAN + 7xLAN/WAN + 2 SFP Slot
Type of Processor / RAM DDR3	X86 / 4GB
Storage (S=SSD) / (H=HDD)	128GB / 1000GB
USB / VGA Port	2/1
Form Factor	1U Rackmount
Dimensions (mm) - (HxWxD)	44x230x265
Weight (Kg) / Color	4 / Black or Grey
Power Supply	Single / Dual PSU
Redundant Fan	Yes
Hot Swapable Redundant Fan	No
Consumption	60W
Total Heat Dissipation (BTU)	160
Operating Temperature	0-45° C
Storage Temperature	2-70° C
Relative Humidity (NC)	10 to 90%
Regulatory Compliance	FCC Part 15, Class B, CE

# All specification and photos are subject to change without prior notice.

1.Maximum throughput performance is measured under ideal test conditions using industry standard performance test tools. 2. Firewall UDP throughput performance is based on RFC 2544 guidelines. 3.All Performance values are upto or rough guideline only and vary depending on system configuration. 3. IPS throughput(http) measured using default IPS rule set and 512KB object size. 4.VPN throughput measured using multiple tunnels with 512KB response size. 5.Testing done with multiple flows through multiple port pairs. \* If all slots populated.

## Ordering Information

EN6200-Prime Octa-75-SD-SH-Y	8 Port device includes AV/CF/AS/IDS/IPS/AAA/HW Warranty subscription with "X" for PSU, "H" Variant and "Y" Support.
S= SSD (Solid State Drive)   H = HDD (Hard Disk Drive) Y = Subscription years options : 1 Year or 3 Years or 5 Years SD = Single / Dual Power Supply Unit	

## Tacitine Assured Support

Tacitine products come with direct OEM 24/7 support by trained Professionals for product configuration and support.TAS helps customer on security best practices to make the network hacker free and more reliable.



www.tacitine.com

## Features

- Router
- Multi LAN/WAN connection
- Scalable Users
- Auto Load Balancer
- Auto Fail Over
- SPI Firewall
- Geo IP Filter
- Web Security
- Content Filter
- Email Security
- Gateway Level Antivirus
- Intrusion Prevention System
- Intrusion Detection System
- AAA User Management
- VPN - SSL/IPSec
- Quality of Service
- DDNS/SNMP/Remote sys log
- Traffic Analyzer
- Inbuilt Logs & Reports

Tacitine Consulting Pvt Ltd,  
6/1, 1st Main,  
Behind Kodava Samaj, Vasanth Nagar,  
Bangalore – 560 052.  
India | USA | Middle East | South East Asia